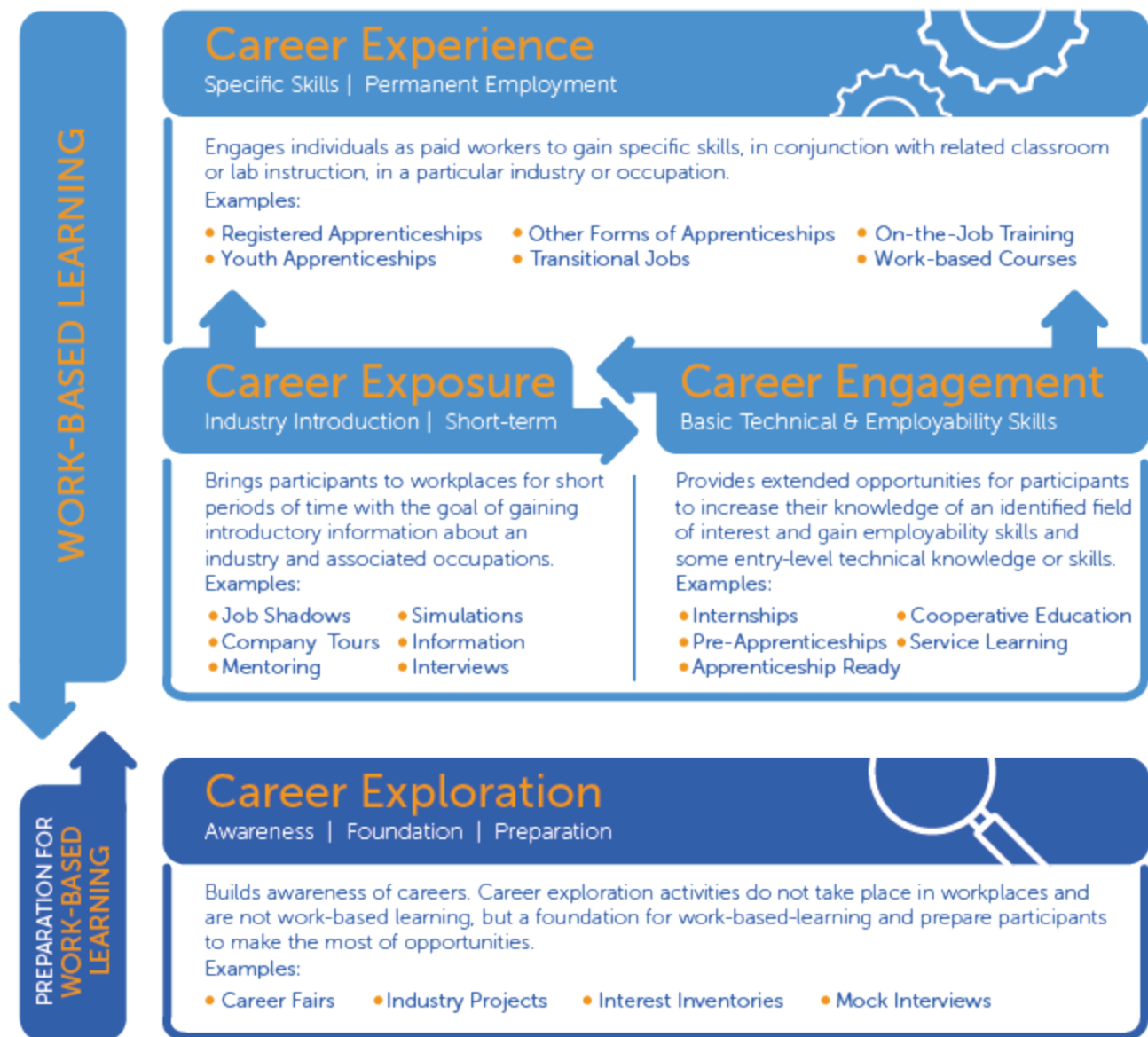


### What is Work-Based Learning?

This common question can be answered in many ways. One simple explanation is that work-based learning is learning about work, at work. Activities range from job shadow to apprenticeships. Jobs for the Future created a framework to help clarify what constitutes work-based learning. *“Work-based learning supports a continuum of lifelong learning and skill development for a range of workers and learners.”*



### Montana Teacher Externships

The [Teacher Externship application](#) is open now until **March 1!** Please spread the word to educators and businesses.

Educator Externships are a unique professional development opportunity where teachers are immersed in a company to learn about the skills and competencies needed to succeed in that industry or career path. The experience strengthens an educator's teaching abilities and brings relevant, real-world context into the classroom. Externships are often transformative for educators, students, and industry partners. Impacting just one teacher allows a company to reach between 20-150 students each year.

Participants will be matched with a local business or organization in their area and will spend three days on-site, working alongside industry professionals and gaining valuable experience in their field. After some post-externship work, the educators earn a stipend and continuing education credits.



### Lend Your Voice to Montana's vision for Career & Technical Education (CTE)

There are two public hearings on the Perkins State Plan:

Feb 8 & Feb 22  
5:30pm - 7:00pm  
[Zoom Link](#)

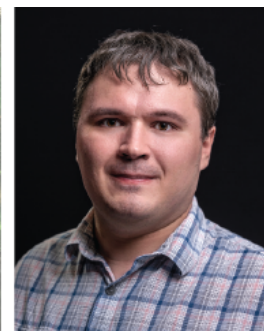
[Click here](#), for more information.

### In the news:

*"More than half of Americans no longer believe college is worth the cost. Paid internships could help."*  
[Read more about how paid internships contribute to a "stronger, more equitable economy".](#)

### Staffing Update

**Gabrielle (Gabe) Eklund Rowley** and **Ian Beagles** have officially started in their new roles supporting the Montana Work-Based Learning Collaborative at Reach Higher Montana. They are getting oriented to the organization and the project. They are incredibly excited to be working with the Collaborative. Ian says he "enjoys using data to show the advantages of WBL to both students and employers." Gabe is eager to help facilitate further progress toward the Collaborative's goals. Feel free to reach out with any questions, concerns or suggestions! A big thank you to the Blank Foundation for supporting this important work, and helping us grow the capacity of the Collaborative!



### Upcoming meetings:

**Quarterly Meeting** (virtual)  
Tuesday, February 13  
11:00 am - 1:00 pm

**Quarterly Meeting** (in-person)  
Thursday, April 11

### Questions:

**Gabrielle Eklund Rowley**

WBL Collaborative Director

Email: [growley@ReachHigherMontana.org](mailto:growley@ReachHigherMontana.org)

Sent to:info@reachhighermontana.org

[Unsubscribe](#)

Reach Higher Montana, 7 West 6th Ave. Ste. 615, Helena, MT 59601, United States